

# Deltaweld® Systems

**MIG Welding Systems** 

## Quick Specs

### Heavy Industrial Manufacturing

General manufacturing  
General fabrication  
Structural steel fabrication  
Transportation  
Sheet metal fabrication  
Light-gauge tube and sheet

### Processes

MIG (GMAW-P)  
Flux-cored (FCAW)  
Accu-Pulse® MIG (GMAW-P)  
(with Intelx™ Pro feeder)  
Air carbon arc (CAC-A)  
Rated: 3/8-inch carbons  
(500 model only)

### Input Power

**350:** 208/230/460 V, 3-phase, 60 Hz  
**500:** 208/230/460 V or 575 V, 3-phase, 60 Hz

### Rated Output

**350:** 350 A at 60% duty cycle  
**500:** 500 A at 100% duty cycle

### Output Range

**350:** 20–400 A, 10–38 V  
**500:** 30–650 A, 10–44 V

## Make Your Move

*The new standard in manufacturing provides the solution for welders of all skill levels, plus pulsed MIG capabilities with Intelx Pro integrated packages.*

### Ready to weld

Reduce the time and hassle of setting up welding systems. Make your move to a weld-ready Deltaweld MIGRunner™.

### Dedicated wire feeder options

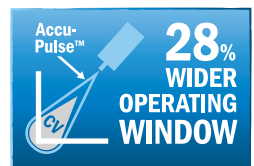
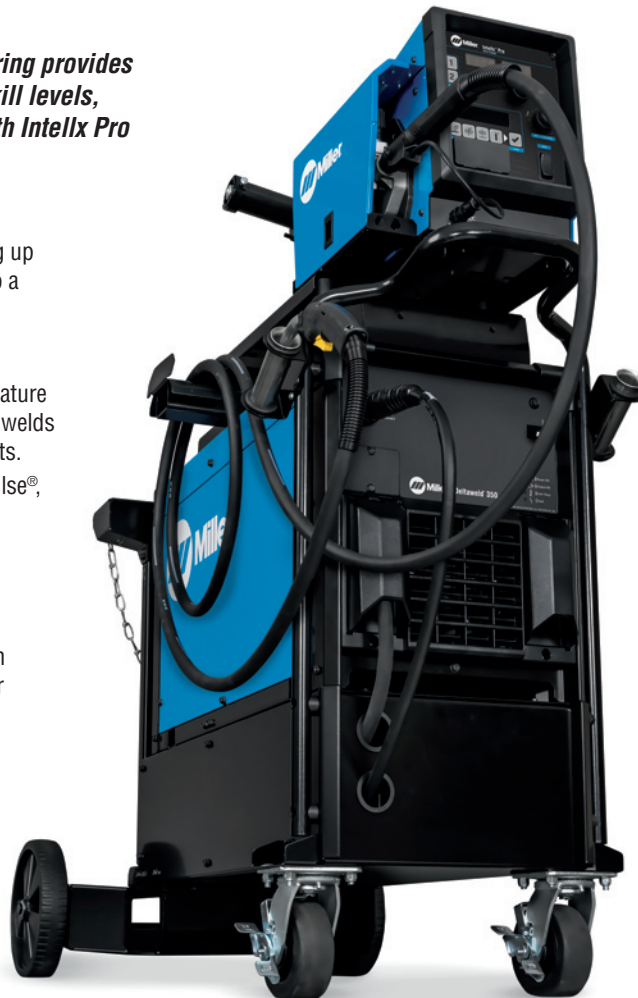
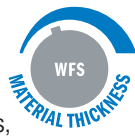
- Intelx feeder — New arc control feature means welders can produce better welds with minimal parameter adjustments.
- Intelx Pro feeder — Adds Accu-Pulse®, EZ-Set, steel weld programs, and memory buttons.

### Legacy meets pulse

Accu-Pulse offers a more forgiving arc and compensates for variations in operator technique, providing a wider operating window.

### Easy to use

EZ-Set simplifies parameter setup based on material thickness, removing complexity.



Deltaweld 350 MIGRunner™ with Intelx™ Pro feeder shown.



Power source is warranted for three years, parts and labor.  
Original main power rectifier parts are warranted for five years.  
Gun warranted for 90 days, parts and labor.



**Miller Electric Mfg. LLC**  
An ITW Welding Company  
1635 West Spencer Street  
P.O. Box 1079  
Appleton, WI 54912-1079 USA

**Equipment Sales US and Canada**  
Phone: 866-931-9730  
FAX: 800-637-2315  
International Phone: 920-735-4554  
International FAX: 920-735-4125

**MillerWelds.com**  




## Genuine Miller® Accessories



**Deltaweld  
350/500  
Running Gear  
301523**

Features small footprint, dual-cylinder rack, chains for gas cylinders, ergonomic handle design and lockable front casters with two torch holders, and storage area below.

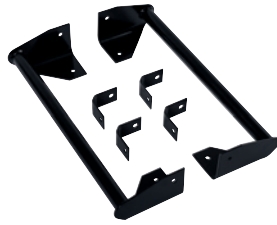
Features small footprint, dual-cylinder rack, chains for gas cylinders, ergonomic handle design and lockable front casters with two torch holders, and storage area below.



**Cart Accessory Kit 301528**

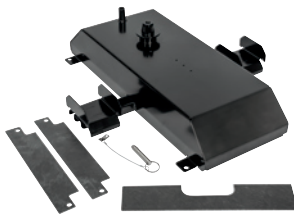
Single-wire feeder kit for use with running gear 301523. See note below for dual-wire feeder kit. Consists of flowmeter regulator with 5-foot (1.5 m) gas hose, 10-foot (3 m) 4/0 feeder weld cable with lugs, 15-foot (4.6 m) work cable with 600-amp C-clamp, and 9-foot (2.7 m) ArcConnect control/motor cable. Dual kit comes with an additional flowmeter regulator and gas hose.

Note: For dual-wire feeder kit both 301528 and 301579 are required.



**Stationary Handle Kit 301529**

Allows easy movement and portability of the power source.



**Feeder Swivel Kit 301533**

For single- and dual-wire feeders. Allows feeder to mount to the top of Deltaweld. Only single-wire feeder can swivel.



**Hanging Bail 058435**

Used for suspending feeder over work area.



**ArcConnect Control/Motor Cables**

**280471009** 9 ft. (2.7 m)

**280471015** 15 ft. (4.6 m)

**280471025** 25 ft. (7.6 m)

**280471050** 50 ft. (15.2 m)

**280471075** 75 ft. (22.9 m)

**280471100** 100 ft. (30.5 m)

Connects power source directly to feeder or remote operator interface.

Note: Cables cannot be joined together to create longer lengths and extension cables are not available.



**Work Sense Leads  
(volt sense)**

**300461** 25 ft. (7.6 m)





**300462** 50 ft. (15.2 m)

When connected from the back of the wire feeder to the workpiece, the work

sense lead provides accurate voltage feedback on the wire feeder display, and compensates for any voltage drop from the weld cables.

## Drive Roll Kits and Guides

Select drive roll kits from chart below according to type and wire size being used. Drive roll kits include four drive rolls, necessary guides and feature an anti-wear sleeve for inlet guide.

Wire Size	"V" groove for hard wire 	"U" groove for soft wire or soft-shelled cored wires 	"V" knurled for hard-shelled cored wires 	"U" cogged for extremely soft wire or soft-shelled cored wires (i.e., hard facing types) 
.023/.025 in. (0.6 mm)	<b>087132</b>	—	—	—
.030 in. (0.8 mm)	<b>046780</b>	—	—	—
.035 in. (0.9 mm)	<b>046781</b>	<b>044750</b>	<b>046792</b>	—
.035 and .045 in. (0.9 and 1.2 mm)	<b>227061*</b>	—	—	—
.040 in. (1.0 mm)	<b>191917</b>	—	—	—
.045 in. (1.1/1.2 mm)	<b>046782</b>	<b>046785</b>	<b>046793</b>	<b>083319</b>
.052 in. (1.3/1.4 mm)	<b>046783</b>	<b>046786</b>	<b>046794</b>	—
1/16 in. (1.6 mm)	<b>046784</b>	<b>046787</b>	<b>046795</b>	<b>046800</b>
.068/.072 in. (1.8 mm)	—	—	—	—
5/64 in. (2.0 mm)	—	<b>046788</b>	<b>046796</b>	<b>046801</b>

\*Included with Intelx feeders. Drive roll is dual-size reversible with one .035-inch and one .045-inch groove.

### Wire Guides

Wire Size	Inlet Guide	Intermediate Guide
.023-.040 in. (0.6-1.0 mm)	<b>221030</b>	<b>056206</b>
.045-.052 in. (1.2-1.3 mm)	<b>221030</b>	<b>056207</b>
1/16-5/64 in. (1.6-2.0 mm)	<b>221030</b>	<b>056209</b>
5/64-1/8 in. (2.0-3.2 mm)	<b>229919</b>	<b>056211</b>