



## Digital Elite™ Series

### 4 Sensors

Item #	Description	Performance Series	
		ANALOG	DIGITAL
1	Helmet Shell, Black	216331	216331
	Helmet Shell, Black (QR)	241976	241976
	Helmet Shell, Camouflage	227190	227190
	Helmet Shell, Stars and Stripes III	265709	265709
	Helmet Shell, Inferno	223454	223454
	Helmet Shell, Lucky's Speed Shop	237872	237872
	Helmet Shell, Pink Camo	273954	273954
	Helmet Shell, Fury	256172	256172
	Helmet Shell, Vintage Roadster	260086	260086
	Helmet Shell, Not Forgotten	260128	260128
	Helmet Shell, Cat® - 1st Edition	268619	268619
	Helmet Shell, Blue Flame	269274	269274
	Helmet Shell, Hot Rod Garage	269947	269947
	Helmet Shell, Raptor	280958	280958
2	Inside Lens Cover (4 1/4 x 2 1/2 in) (5-Pkg)	216327	216327
3	Lens Assembly, Digital Elite	216328	280056
	Lens Assembly, Digital Elite (CAT)	—	280059
3a	Gasket, Auto-Darkening Lens Assembly	234758	234758
3b	Gasket, Lens Assembly (QR)	241977	241977
4	Gasket, Front Lens	216337	216337
5	Front Lens Cover (4 11/16 x 5 5/8 in) (5-pkg)	216326	216326
6	Front Lens Holder, Black, Flat	241978	241978
7	Lens Holding Frame	216335	234759
8	Ratchet Headgear Assembly (includes #9 & #10)	770246	284218
	Adjustment Angle/Stop Hardware Kit	770248	256178
10	Fabric Headband	770249	770249
	Replacement O-Rings For Kits 258178 & 770248 (5 Per Pkg)	079975	079975
11	Comfort Cushion	216336	—
12	Battery Tray, Kit (Left/Right)	216339	216339
	Battery, Lithium Cr2450 (Not Shown)	217043 (2)	217043 (2)



**Stars and Stripes™ III**  
281002  
16 oz.

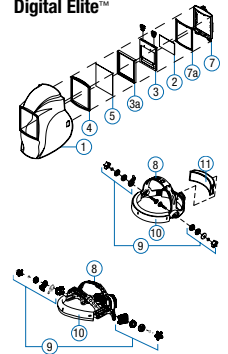


**CAT® - First Edition**  
281006  
16 oz.



©2020 Caterpillar. CAT, CATERPILLAR, and their design marks are registered Caterpillar. Miller Electric Mfg. LLC, is a licensee of Caterpillar Inc.

### Digital Elite™



**Lucky's Speed Shop™**  
281001  
16 oz.



**Vintage Roadster™**  
281004  
16 oz.



**Raptor™**  
281007  
16 oz.

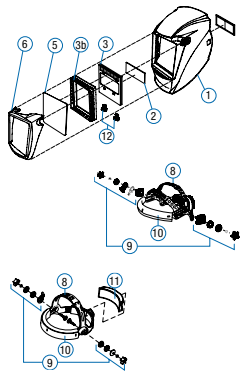


**Black**  
281000  
16 oz.



**Inferno™**  
281003  
16 oz.

### Elite Analog (QR) Series



## Digital Performance™ Series

### 3 Sensors

Item #	Description	Performance Series	
		ANALOG	DIGITAL
1	Helmet Shell, Black	232020	232020
	Helmet Shell, Camouflage	241461	241461
	Helmet Shell, American Eagle II	265708	265708
	Helmet Shell, Blue Rage	241459	241459
	Helmet Shell, Illusion	256171	256171
	Helmet Shell, '64 Custom	250533	250533
	Helmet Shell, Cat® - 1st Edition	268740	268740
	Helmet Shell, Crusher	287366	287366
2	Inside Lens Cover (4 1/4 x 2 in) (5-Pkg)	770237	770237
3	Auto-Darkening Lens Assembly	232026	280055
3	Lens Assembly, Performance Series (Cat)	—	269505
4	Gasket, Front Lens	232028	232028
5	Front Lens Cover (4 3/8 x 5 in) (5-Pkg)	231921	231921
6	Front Lens Holder, Black, Flat	232030	232030
	Front Lens Holder, Gloss Black	232032	232032
	Front Lens Holder, Camouflage	243395	243395
	Front Lens Holder, Light Blue	251278	251278
	Front Lens Holder, White	257041	257041
	8	Ratchet Headgear Assembly (Includes #9 & #10)	770246
9	Adjustment Angle/Stop Hardware Kit	770248	256178
10	Fabric Headband	770249	770249
	Replacement O-Rings For Kits 258178 & 770248 (5 Per Pkg)	079975	079975
11	Comfort Cushion	216336	—
12	Battery Tray, Kit (Left/Right)	232027	256730
	Battery, Lithium CR2450 (Not Shown)	217043	217043 (2)



**Blue Rage™**  
282001  
16 oz.



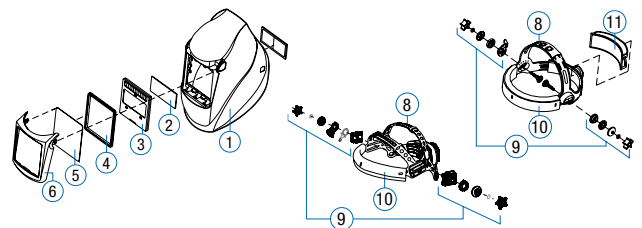
**'64 Custom™**  
282002  
16 oz.



**Black**  
282000  
16 oz.



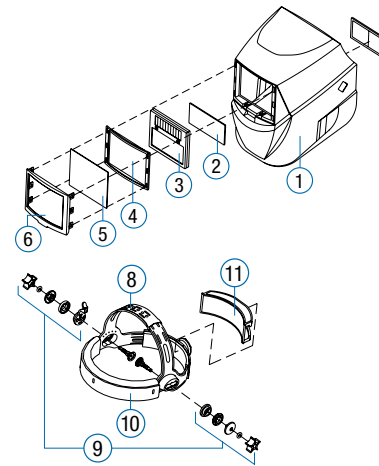
**Crusher™**  
287366  
16 oz.



# Welding Protection

## Digital Pro-Hobby™ Series 2 Sensors

Item #	Description	Pro-Hobby Series	
		ANALOG	DIGITAL
1	Helmet Shell, Black	231415	231415
	Helmet Shell, Red Flame	231419	231419
	Helmet Shell, Camouflage	231418	231418
	Helmet Shell, American Eagle II	265707	265707
	Helmet Shell, Metalworks	260087	260087
2	Inside Lens Cover (4 1/4 x 1 3/4 in) (5-Pkg)	231410	231410
3	Lens Assembly	231409	256467
4	Gasket, Front Lens	231412	231412
5	Front Lens Cover (4 1/2 x 3 3/4 in) (5-Pkg)	231411	231411
6	Front Lens Holder, Black, Flat	231572	231572
	Front Lens Holder, Gray	231573	231573
	Front Lens Holder, Red	231574	231574
	Front Lens Holder, Blue	231575	231575
	Front Lens Holder, Camouflage	231576	231576
8	Ratchet Headgear Assembly (Includes #9 & #10)	770246	284218
9	Adjustment Angle/Stop Hardware Kit	770248	256178
10	Fabric Headband	770249	770249
	Replacement O-Rings For Kits 258178 & 770248 (5 Per Pkg)	079975	079975
11	Comfort Cushion	216336	—
12	Battery Tray, Kit (Left/Right)	—	256729
	Battery, Lithium CR2450 (Not Shown)	AAA Alkaline	217043 (2)
	Battery Cover (Not Shown)	231413	—

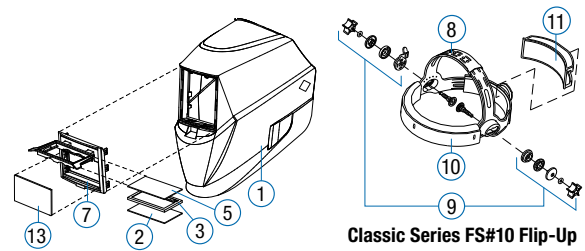


Digital/Analog Pro-Hobby™ Series  
16oz.

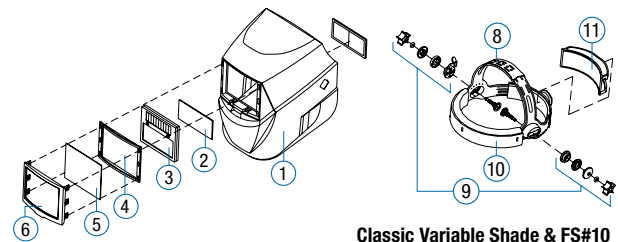
## Classic Series 2 Year Warranty

Item #	Description	Classic Series			
		FS#10	VS	VSi™	FS#10 Flip-Up*
1	Helmet Shell, Black	231415	231415	261824	231415
	Helmet Shell, Stars & Stripes	—	265707	—	—
	Helmet Shell, Red Flame	—	231419	—	—
	Helmet Shell, Metalworks	—	260087	—	—
	Helmet Shell, Camouflage	—	231418	—	—
	Helmet Shell, Liberty	—	287370	—	—
2	Inside Lens Cover (4 1/4 x 2 in) (5-Pkg)	—	—	—	770237
	Inside Lens Cover (4 1/4 x 1 3/4 in) (5-Pkg)	231410	231410	231410	—
3	Auto-Darkening Lens Assembly	231571	251293	261826	770226
3b	Gasket, Lens Assembly (QR)	—	—	261827	—
4	Gasket, Front Lens	231412	231412	—	—
5	Front Lens Cover (4 1/4 x 2 in) (5-Pkg)	—	—	—	770237
	Front Lens Cover (4 1/2 x 3 3/4 in) (5-Pkg)	231411	231411	—	—
	Front Lens Cover (5 1/4 x 4 1/2 in) (5-Pkg)	—	—	235628	—
6	Front Lens Holder, Black, Flat	231572	231572	261828	—
7	Frame, Lens Holding	—	—	—	261829
8	Ratchet Headgear Assembly (Includes #9 & #10)	770246	770246	770246	770246
9	Adjustment Angle/Stop Hardware Kit	770248	770248	770248	770248
10	Fabric Headband	770249	770249	770249	770249
	Replacement O-Rings For Kits 258178 & 770248 (5 Per Pkg)	079975	079975	079975	079975
11	Comfort Cushion	216336	216336	216336	216336
12	Battery, Lithium CR2450 (Not Shown)	—	AAA Alkaline	217043	—
	Battery Cover (Not Shown)	—	231413	266781	—
13	Lens, Grinding Shield (Clear)	—	—	245818	261830
14	Clips, Retaining Grinding Shield	—	—	245819	—
16	Clips, Visor Hinge (I-Series Shell)	—	—	255070	—
17	Lens Tear-Off, Grind Shield (Clear) (Not Shown)	—	—	254278	—

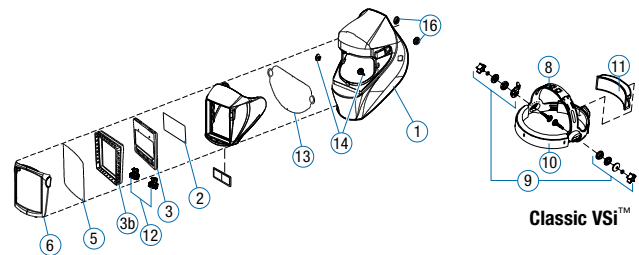
\*Order flip-up separately. VSi Hinge Kit 269929



Classic Series FS#10 Flip-Up



Classic Variable Shade & FS#10



Classic VSi™



FS#10 Flip-Up  
263038  
14 oz.



VSi  
260938  
23 oz.



Variable Shade  
251292  
16 oz.



Metalworks™  
271346  
16 oz.



Rise™  
271349  
16 oz.



Liberty™  
287369  
16 oz.

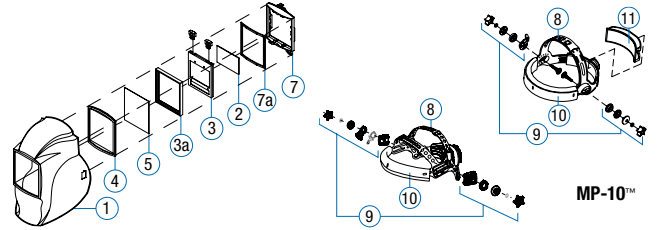


## MP-10™ Series 90 Day Warranty

Item #	Description	MP-10 Series
1	Helmet Shell, Black	216331
	Helmet Shell, Inferno	223454
2	Inside Lens Cover (5 1/4 x 4 1/2 in) (5-Pkg)	235628
3	Filter Plate	235630
4	Gasket, Front Lens	216337
5	Front Lens Cover (4 11/16 x 5 5/8 in) (5-Pkg)	216326
7	Lens Holding Frame	234759
		216335
7a	Spacer, Lens Holding (MP-10)	235629
8	Ratchet Headgear Assembly (Includes #9 & #10)	770246
9	Adjustment Angle/Stop Hardware Kit	770248
10	Fabric Headband	770249
	Replacement O-Rings For Kits 258178 & 770248 (5 Per Pkg)	079975
11	Comfort Cushion	216336



**Black**  
238497 (Each)



MP-10™

## Helmet Accessories and Packages



**Gen 3 Headgear**  
271325  
Oversized comfort cushion provides extensive adjustability, settings, and enhanced support



**Gen 3.5/4 Headgear**  
284218/260486  
Ergonomic, comfort cushion provides extensive adjustability, settings and enhanced support



**Helmet Hook**  
251018  
• Holds welding helmets, grinding shields or other helmets with a headgear  
• Silicone strap secures the helmet in place



**Helmet Bib**  
253882  
Attaches to bottom of the helmet with hook-and-loop fasteners for added neck coverage



**Helmet Bag**  
770250  
• Drawstring closure  
• Ultra-soft inside liner  
• Exterior storage pouch



**Slotted Hard Hat Adapter**  
259637  
Compatible with most slotted hard hats. Helmet and hat not included



**Hard Hat Adapter**  
213110 (XI and XLi)  
265315 (T94 Series)  
222003 (Titanium, XLix, Elite, Performance, ProHobby, Classic and MP-10 Series)  
Compatible with Fibre Metal and MSA hats. Other brands may fit depending on size and shape. Helmet and hat not included.



**Jobsite Tool Bag**  
228028  
• Over twenty separate pockets  
• Opening of 12 x 18.5 inches (305 x 470 mm)  
• 12.5 x 14 x 22 (overall dimensions)



**2x4 Auto-Darkening Lens**  
770660 Shade 8  
770659 Shade 9  
770226 Shade 10  
770961 Shade 11  
• Fits all 2x4-inch windows  
• Solar powered, two arc sensors  
• Light state shade 3  
• Two-year warranty



**T94™ Helmet Lighting Kit**  
281361  
• Designed exclusively for T94™ Series welding helmets



**Helmet Lighting Kit**  
259637  
• Lighting accessory kit for MP-10™, Classic, Digital Performance™, Digital Elite™ and Digital Infinity™ Series welding helmets

## Lenses

Bulk Cover Lenses		
Part #	Description	Quantity
265304B	Front Lens Cover, T94	50 pkg.
216326B	Front: Elite, Titanium, MP-10	50 pkg.
216327B	Inside: Elite, Titanium, 9400i, T94, T94i	50 pkg.
231921B	Front: Performance	50 pkg.
770237B	Inside: Performance	50 pkg.
231411B	Front: Pro-Hobby, Classic	50 pkg.

Magnifying Lenses for All Miller Helmets (Lens size is 4 1/4" x 2" x 5/23)	
Part #	Strength
212235	0.75 Magnification
212236	1.00 Magnification
212237	1.25 Magnification
212238	1.50 Magnification
212239	1.75 Magnification
212240	2.00 Magnification
212241	2.25 Magnification
212242	2.50 Magnification