

**Tweco**  
WeldSkill®

**4 SENSORS**

for Enhanced  
Performance

**VALUE-PRICED**

and Affordable



**AUTO-DARKENING  
WELDING HELMET**

[www.tweco.com](http://www.tweco.com)



# WeldSkill® Auto-Darkening Welding Helmet

The new Tweco® WeldSkill auto-darkening welding helmet provides enhanced performance with 4 arc sensors at an affordable price. It offers operator comfort due to its lightweight construction and versatility. With superior performance, durability and flexibility, Tweco WeldSkill helmets offer exceptional value in personal welding protection.



SHADE #9



SHADE #10



SHADE #11



SHADE #12



SHADE #13

## THE NEW TWECO HELMETS FEATURE:

- **ENHANCED PERFORMANCE**  
Four arc sensors for high response
- **AUTO-DARKENING**  
Automatically turns from light to dark and dark to light
- **LIGHTWEIGHT**  
For optimum comfort,  
16 oz (450 grams)
- **VARIABLE SHADE**  
Adjustable welding shade levels from 9 to 13
- **LIGHT SHADE DIN LEVEL**  
Level shade 4
- **UV/IR PROTECTION**  
Level shade 16 (DIN)
- **“SENSITIVITY” CONTROL RANGE**  
Low to high
- **RESPONSIVE LENS SWITCHING SPEED**  
up to 1/30,000 sec  
(33 microseconds)
- **“DELAY” ADJUSTABLE CONTROLS**  
Selection for switching speed:  
“short” = 0.25s to 0.35s  
“medium” = 0.35s to 0.50s  
“long” = 0.50s to 0.80s
- **“WELDING” OR “GRINDING”**  
Selection for process mode
- **LARGE VIEWING AREA**  
3.86" x 1.69" (98 mm x 43 mm)
- **SOLAR-POWERED**  
So you don't have to worry about changing batteries
- **AFFORDABLE**  
Value-priced
- **CERTIFIED**  
ANSI Z87.1, CE EN 379 and EN 175
- **SUPPORT**  
Backed by Tweco support, quality, reliability, and 2-year warranty



## Form, Fit & Function



### Welding Helmet Head Gear



### Settings for Delay and Process Mode





## Certifications & Conformance

- **Conforms to ANSI Z87.1 – 2010:** Applicable to Practice for Occupational and Educational Eye and Face Protection, Welding Helmets.
- **Conforms to CE EN379:** Applicable to Specification for Welding Filters with Switchable Luminous Transmittance and Welding Filters with Dual Luminous Transmittance (variable shade).
- **Conforms to CE EN175:** Applicable to Personal Protection Equipment for Eye and Face Protection during Welding and Allied Processes.



### CARBON FIBER

Part No: WHF41001  
Stock No: 4100-1001



### PATRIOT EAGLE

Part No: WHE41002  
Stock No: 4100-1002



### CHOPPER RIDER

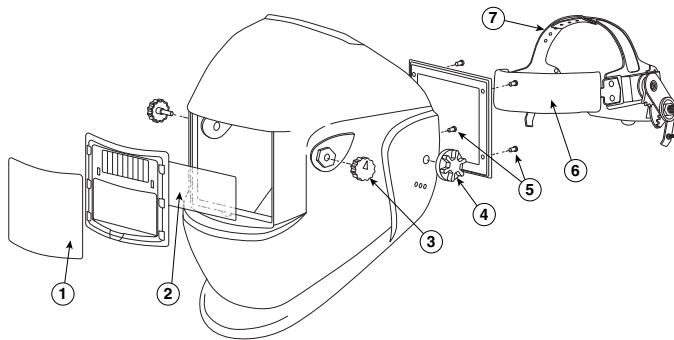
Part No: WHC41003  
Stock No: 4100-1003



### SKULL & FIRE

Part No: WHS41004  
Stock No: 4100-1004

## Replacement Parts



### PARTS LISTING

#	Part No.	Stock No.	Description
1	WH41001-FL	2089-1010	Front Cover Lens
2	WH41001-IL4	2089-1026	Inside Cover Lens
3	WH41001-KB	2089-1013	Shade/Sensitivity Knob
4	WH41001-BN	1089-1017	Headgear Knob
5	WH41001-FF	2089-1018	Filter Frame w/Screws
6	WH41001-HB	2089-1020	Headband
7	WH41001-HG	2089-1023	Headgear Assembly
NS	WH41001-HH	2089-1024	Hard Hat Fixtures
NS	WH41001-ML	2089-1025	Magnifying Lens Kit (2X Magnification)